

**Adagio** (♩=67)

1

2

---

3

*Pizz.*

*Unite  
Arco*

*Unite  
Arco*

 $\angle mf$ 

5

$$> mp$$

*Poco rall.*

*A tempo*

8

$$ff$$
 $f$ 

9

$$> mp$$

10

*Poco rall.*  *A tempo*

 $(mp)$ 

*poco a poco cresc.*

 $f$ 

12

*Div.*

*Div.*

*mp*

*Pizz.*

13

*Unite*

 $\leq mf$ 

*poco a poco cresc.*

 $f$ 

*Rall.*

# Winterkoude in de Heuvels

from the 'Mychenka Suite'

Derk van der Veen

Adagio (♩=67)

3



4

6

*A tempo*



7

8



9



*Poco rall.*

10

*A tempo*



11

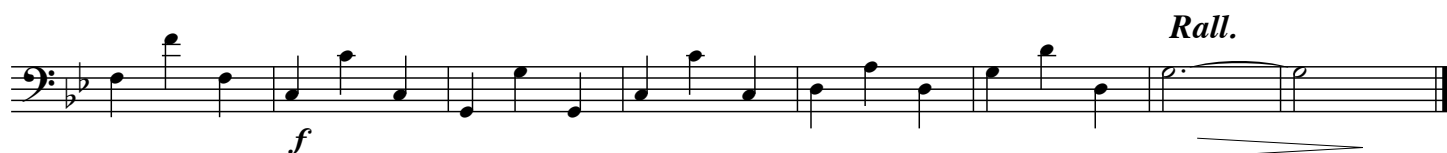
12



13



*Rall.*



**Adagio** (♩=67) 2

16 *mp*

3 *mp* 4 5 *mp*

*Poco rall.* 6 *A tempo* 7 *mf*

8 *f*

(8va) 9 *ff* *f* 10 *Poco rall. A tempo* *mp*

11 *f* *poco a poco cresc.*

12 *mf* 13 *mf*

*Rall.*

*poco a poco cresc.* *f*

# Winterkoude in de Heuvels

from the 'Mychenka Suite'

Derk van der Veen

**Adagio** (♩ = 67)

3

The musical score for 'The Rose Tree' is written on a single staff. It begins with a treble clef and a key signature of one sharp (F#). The melody is composed of several measures, with some measures containing multiple notes beamed together. Above the staff, there are three boxes containing the numbers 4, 6, and 7, which likely correspond to the lyrics 'The', 'tree', and 'the' respectively. The score includes a double bar line and a dynamic marking of *mf* (mezzo-forte).

[illegible]

12

> mp

13

*mf* *poco a poco cresc.*

The final staff of music is in treble clef and contains a sequence of notes: a half note G4, a quarter note A4, a half note B4, a quarter note C5, a half note B4, a quarter note A4, a half note G4, a quarter note F#4, a half note E4, and a quarter note D4. The piece concludes with a double bar line. Above the staff, the word *Rall.* is written. Below the staff, the dynamic marking *f* is present. A hairpin indicating a decrescendo is shown below the staff, starting from the final measure and extending to the right.

Derk van der Veen

12

*mf* *f* *Rall.*

Derk van der Veen

---

3

Adagio (♩=67) 3 Derk van der Veer



*mf*

4

6

*A tempo*

4 6 *A tempo*

18

*mp*

---

7

6

13

[illegible]

10

*Poco rall. A tempo*

11

9

12

13

*Rall.*

[illegible]

Derk van der Veen

3

[illegible]

The image shows a musical score for a piece in 3/4 time, marked 'Poco rall. A tempo'. The score is written on a single staff with a treble clef and a key signature of one flat (B-flat). The tempo marking is 'Poco rall. A tempo'. The score includes measures 10 and 12, which are highlighted with boxes. Measure 10 contains a half note G4, a quarter note F4, and a quarter note E4. Measure 11 contains a half note D4, a quarter note C4, and a quarter note B3. Measure 12 contains a half note A3, a quarter note G3, and a quarter note F3. The dynamic marking 'mp' (mezzo-piano) is indicated at the end of the score.

13

*mf* *poco a poco cresc.*

The final measure of the piece is marked *Rall.* (Ritardando) and *f* (forte). It contains a half note G4, a half note A4, and a half note B4, all beamed together. The piece ends with a double bar line.

# Winterkoude in de Heuvels

from the 'Mychenka Suite'

Derk van der Veen

Adagio (♩=67)

4



5

Poco rall.

6

A tempo



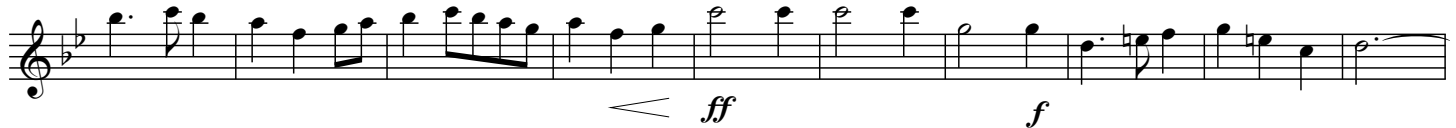
7

8va - - -



8

(8va) - - -



(8va) - - -

9

10

11



12

13

Rall.





# Winterkoude in de Heuvels

from the 'Mychenka Suite'

Derk van der Veen

**Adagio** (♩=67)

**1**

*mf*

**2**

**3**

**4**

*mf*

**5**

*mp* *mf*

**6** *Poco rall.* *A tempo*

*mp*

*Hrp.*

*Hrp.*

*Hrp.*

*Hrp.*

*Hrp.*

7

*Hrp.*

*Hrp.*

*Hrp.*

8

*Hrp.*

*Hrp.*

*Hrp.*

*ff*

*Hrp.*

*f*

*Hrp.*

9

*Hrp.*

*mp*

*Hrp.*

*Poco rall.*

**10** *A tempo*

*Hrp.* *(mp)*

*Hrp.*

*Hrp.*

*poco a poco cresc.*

*Hrp.*

*Hrp.*

*f*

**11**

*Hrp.* **11**

Hrp.

Hrp.

Hrp.

Hrp.

Hrp.

12

*mp*

Hrp.

13

*mf*

*poco a poco cresc.*

Hrp.

*Rall.*

*f*

Derk van der Veen

---

**1**

6

*Rall.*

## Winterkoude in de Heuvels

from the 'Mychenka Suite'

Derk van der Veen

Adagio (♩=67)

1



2



3



4



5

Poco rall. A tempo



7



8



9



Poco rall. A tempo



11



12



13



# Winterkoude in de Heuvels

from the 'Mychenka Suite'

Derk van der Veen

Adagio (♩=67)

1



2



3

4



5



Poco rall. 6 A tempo

7



8



9



10

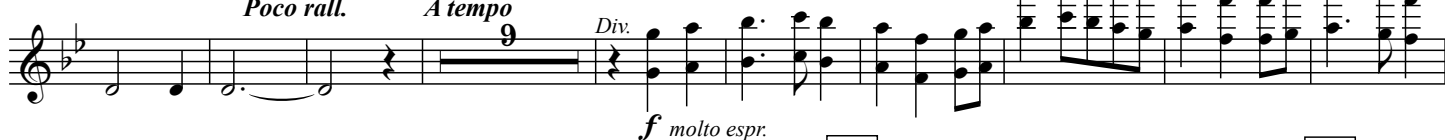
11

Poco rall.

A tempo

9

Div.



12

13



poco a poco cresc.

f

Rall.



# Winterkoude in de Heuvels

from the 'Mychenka Suite'

Derk van der Veen

Adagio (♩=67)

1

*mf* *mp*

2

3

*mp* *mf*

4

*mp*

5

*Poco rall.* *A tempo*

6

9

7

*mf* *f*

8

*ff* *f*

9

*p* *Poco rall.* *A tempo*

10

9

11

*Div.* *f molto espr.*

12

*Div.* *mf*

13

*mp* *f* *Rall.*

*poco a poco cresc.*

## Winterkoude in de Heuvels

from the 'Mychenka Suite'

Derk van der Veen

Adagio (♩=67)

1



2



3



4



&lt; mf

5



Poco rall.

6

&gt; A tempo mp



&gt;

mf

7

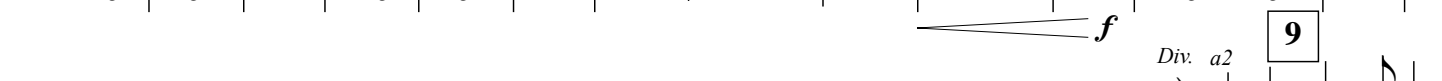


8



&gt; f

9



Div. a2

mp

10



Poco rall.

A tempo

Unite



(mp)



11



Div.

Unite

poco a poco cresc.

f



12



&gt; mp

13



&lt; mf

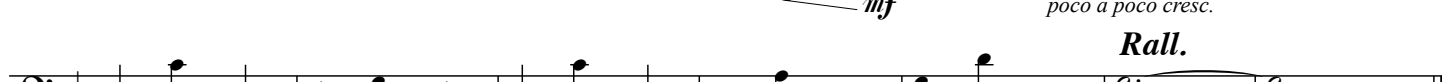
poco a poco cresc.



Rall.



f



&gt;

